

H.264 NETWORK CAMERA

WITH **OXI**
TECHNOLOGY

GANZ
PixelPro **SERIES**

| **IPAdmin Tool User's Manual**

Before connecting, operating or adjusting this product,
read this instruction booklet carefully and completely



Table of Contents

1. Introduction	3
1.1. Requirements.....	3
1.2. Starting IPAdminTool	3
1.3. Menu and button configuration.....	4
2. Scanning Devices	6
2.1. How to search your device.....	6
2.1.1. Viewing video on web page	6
2.1.2. Searching devices with filtering feature.....	7
2.1.3. Searching devices with IP address range	8
2.2. IP management for devices.....	9
2.3. How to check your device Information remotely	10
3. Updating Firmware.....	11
4. Other Features	14
4.1. How to reboot the device remotely.....	14
4.2. How to set the retransmit interval for mDNS queries	15
REVISION HISTORY	16

1. Introduction

IPAdminTool is a utility program for IP device managements, including encoders and cameras. The following list provides a brief summary for the feature of this tool.

- Configure IP address, subnet mask, gateway, DNS, and hostname
- Search available IP devices on network
- Show device information
- Update new firmware on single or multiple devices
- Reboot the system hardware

1.1. Requirements

IPAdminTool can be run properly in Windows7 or later Windows®. *IPAdminTool.exe* and *IPAdminTool.dll* must be placed in the same folder, otherwise an error message is shown as the figure below.



Figure 1. Warning message for IPAdminTool.dll

Factory default ID and password for firmware update:

ID – root

PW - pass

1.2. Starting IPAdminTool

To start IPAdminTool, run the IPAdminTool.exe file. Then the main page of the tool appears as Figure 2.

1.3. Menu and button configuration

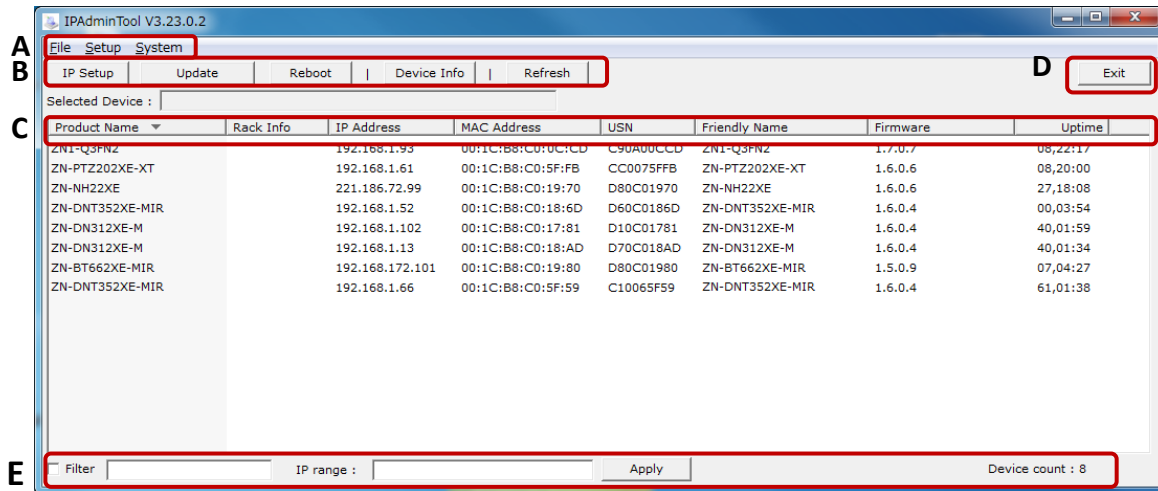


Figure 2. Menus and buttons

Section A

File

Refresh – Refresh the list and get the IP device information.

Exit – Quit this program.

Setup

IP Address – Set IP configuration such as IP address, subnet mask, default gateway, etc.

Friendly name – Set a friendly name for a selected device.

Frequency setting – Set the message sending frequency for MDNS.

System

Update – Update the firmware or any other required files. (Planned for the next firmware release)

Device info – Show the device information.

Reboot – Reboot the device.

Section B

IP Setup - Set the IP configuration such as IP address, subnet mask, default gateway etc.

Update - Upload the firmware or any other required files. (Planned for the next firmware release)

Reboot - Reboot the device.

Device Info– Show the device information.

Refresh – Refresh the list and get the IP devices information.

Section C

Product Name – Product name of your device is displayed.

It can be modified by uploading the brand file involving the product name.

Rack Info – When a device is rack type, the related rack information is displayed.

IP Address – IP Address of the device is displayed.

MAC Address – MAC Address of the device is displayed.

USN – The unique serial number of the device is displayed.

Friendly name – The friendly name of your device is displayed.

Firmware – The current firmware version of the device is displayed.

Uptime – The passed time since the device has been booted (Days: Hours: Minutes).

Section D

Exit – Quit this program.

Section E

Filter – Type any part of numbers or alphabet letters (case sensitive) of device name, IP address, MAC address, USN, friendly name, or firmware in the Filter box to search the desired devices.

IP range – Type the IP address range to display devices that are in the IP range to search the desired devices.

Device count – The total number of scanned devices.

2. Scanning Devices

2.1. How to search your device

Before running the IPAdminTool for finding a device, check out if the device is powered on and connected to the network properly. The IP devices connected to the network and turned on are automatically scanned on the main page of the tool. It re-scans network to keep updating IP devices on the list every 2 seconds. If required, you can also manually perform the scanning by pressing the **Refresh** button.

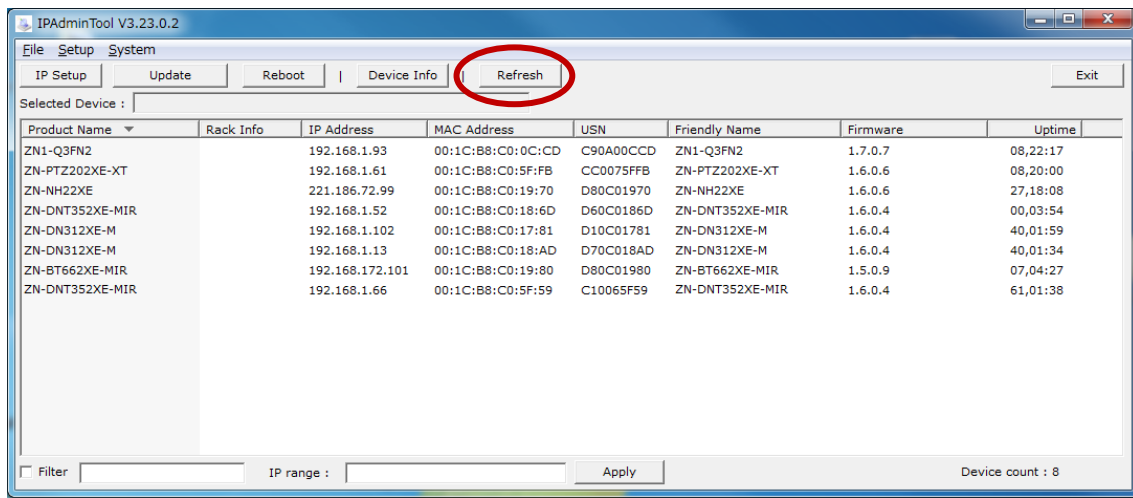


Figure 3. Scanning by the Refresh button

2.1.1. Viewing video on web page

To see the web page for a device, right-click on a product name and then click **Web view** from the short cut menu. To open the web page more simply, just select one or multiple product names and click the Spacebar on your keyboard.

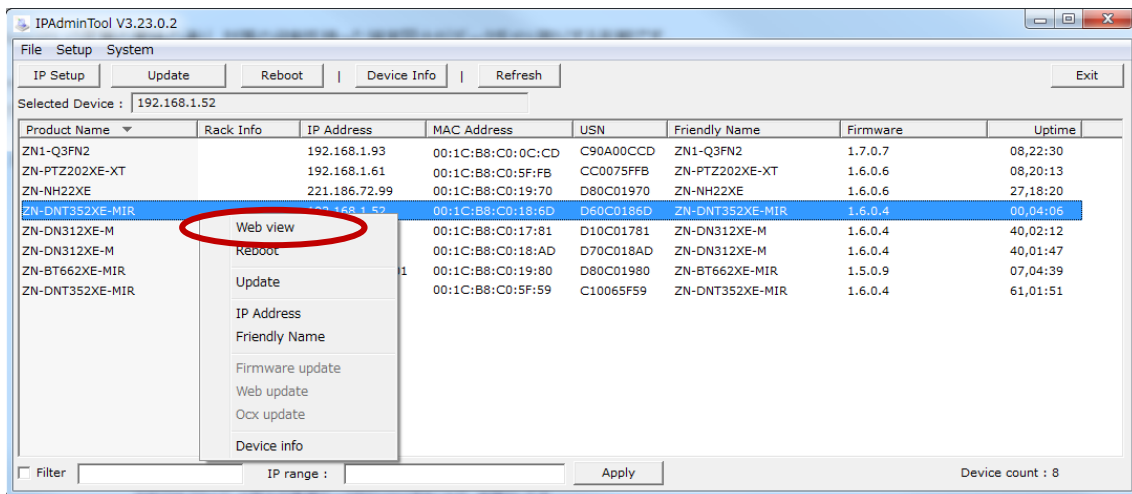


Figure 4. Web viewing option

2.1.2. Searching devices with filtering feature

If your network has multiple IP devices and *IPAdminTool* scans too many devices, you can easily find the desired device by using the filtering feature. Type any part of numbers or alphabet letters (case sensitive) of device name, IP address, MAC address, USN, friendly name, or firmware in the Filter box (e.g. A4, 13.153, A90C, etc.) and click the *Apply* button. IPAdminTool will scan IP devices that include typed numbers or letters only. Refer to the figure below for an example. In this example, all of the IP devices having a letter 'M' in the information are searched.

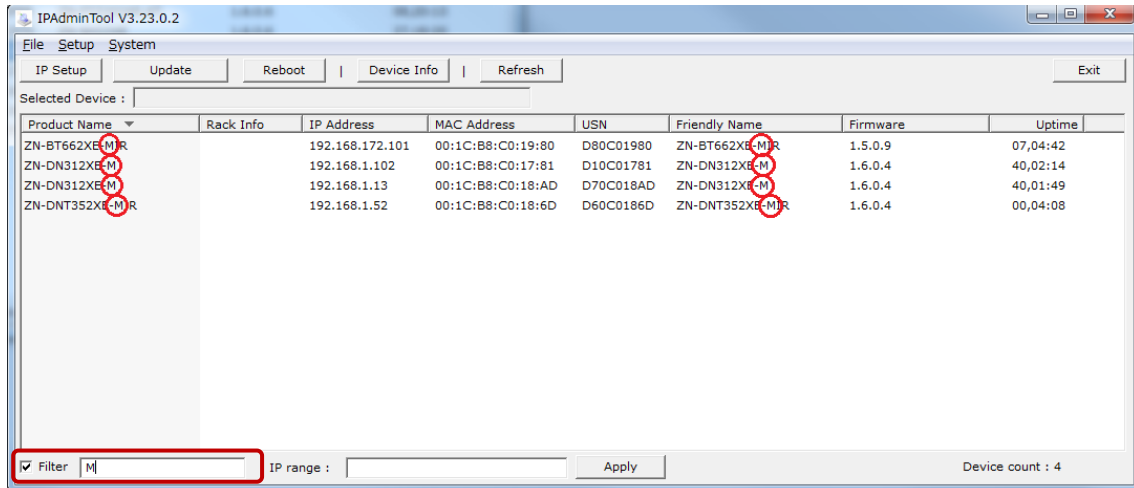


Figure 5. Device filtering

2.1.3. Searching devices with IP address range

You can search multiple devices by specifying the IP address range also. Type the IP address range to display devices that are in the IP range by referring to the following rule.

IP Address Range Filtering Rule

Range input: Start IP Range-End IP Range

IP Range: OCT4[.OCT3[.OCT2[.OCT1]]]

OCT(octet): 0-255

The IP range can be configured with from 1 to 4 octets. 1 octet means the last section of the IP address, 2 octets mean the last two sections of the IP address, and so on.

The specified filtering section number must have set same section number both the start IP address and end IP address. (e.g. 10.1-100.100, 100.10.15-200.80.220).

Refer to the figure below for an example.

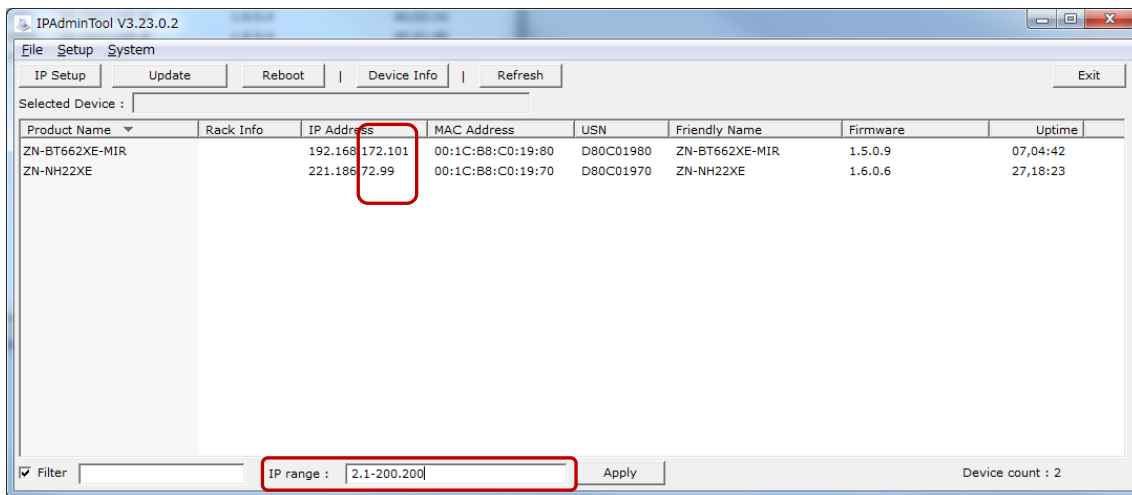


Figure 6. IP range

IP Address Range Filtering Example

IP Range: 2.1-200.200 (Search the devices with last two sections of the IP address.)

Filtered IP address:

192.168.1.13 (X)

192.168.1.52 (X)

192.168.1.61 (X)

192.168.1.66 (X)

192.168.172.101 (O)

221.186.72.99 (O)

2.2. IP management for devices

You can adjust the network setting of a device with IPAdminTool. Select a device from the list and click the **IP Setup** button on the upper menu bar or **IP Address** menu with the mouse right click.

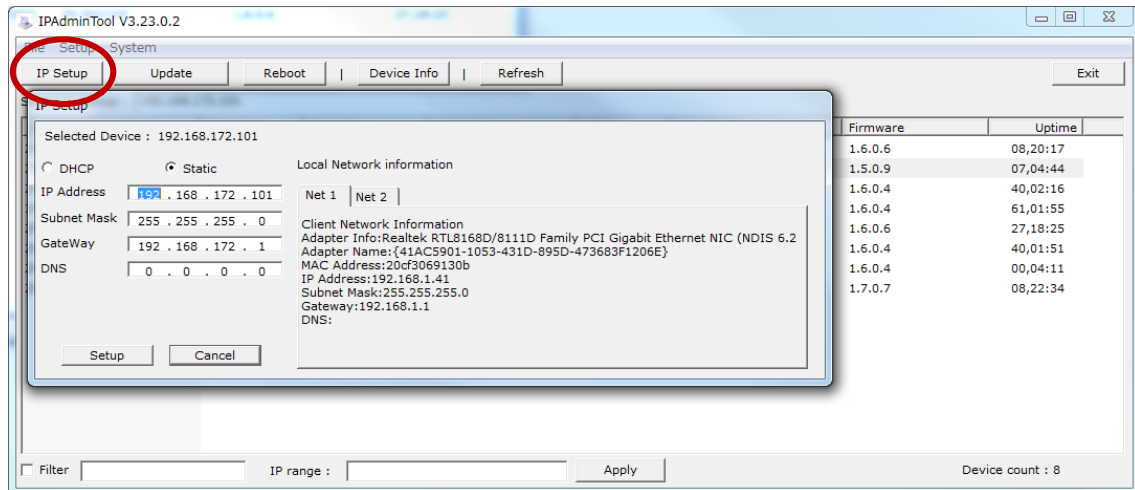


Figure 7. Network setting

DHCP

Let the DHCP server get the IP address automatically.

Static

Set the IP address, Subnet Mask, Gateway and DNS manually according to users' network requirements.

2.3. How to check your device information remotely

The software version information of IP devices can be displayed by selecting the **System > Device Info** menu. You can check the information by selecting **Device Info** from the shortcut menu.

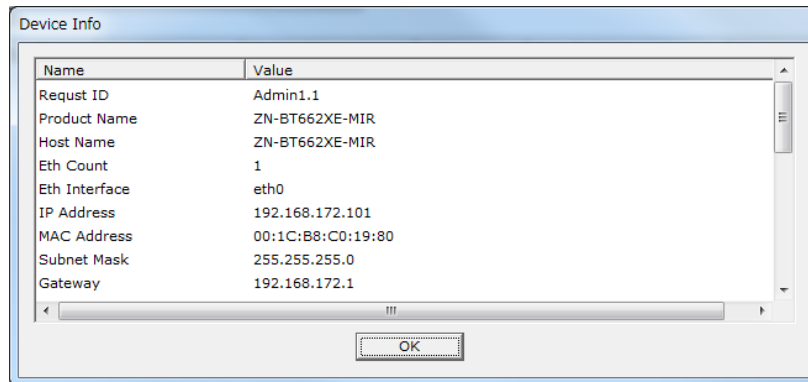


Figure 8. Device information

You can find the device information as below.

- Request ID
- Product Name
- Host Name
- Ethernet Count
- Ethernet Interface
- IP Address
- MAC Address
- Subnet Mask
- Gateway
- IP mode
- DNS
- BootMode
- Firmware Version
- SafeFirmware Version
- Bootloader Version
- Web URL
- Web Port
- RTSP Port
- Update Port
- Uptime
- System Key Method
- Device Serial
- Rack-info
- Description

3. Updating Firmware

IPAdminTool provides the firmware update feature for single or multiple IP devices. To update the firmware for your device, follow the steps described on this chapter.

Step1. Select IP device(s) to update

Select the device you want for the firmware update from the list and it turns blue. You can either update a device one by one or update multiple devices at the same time. To update multiple devices, choose all the devices you want with *Ctrl* or *Shift* and click the **Update** button on the upper menu as the figure below (The mouse shortcut menu also provides the **Update** menu).

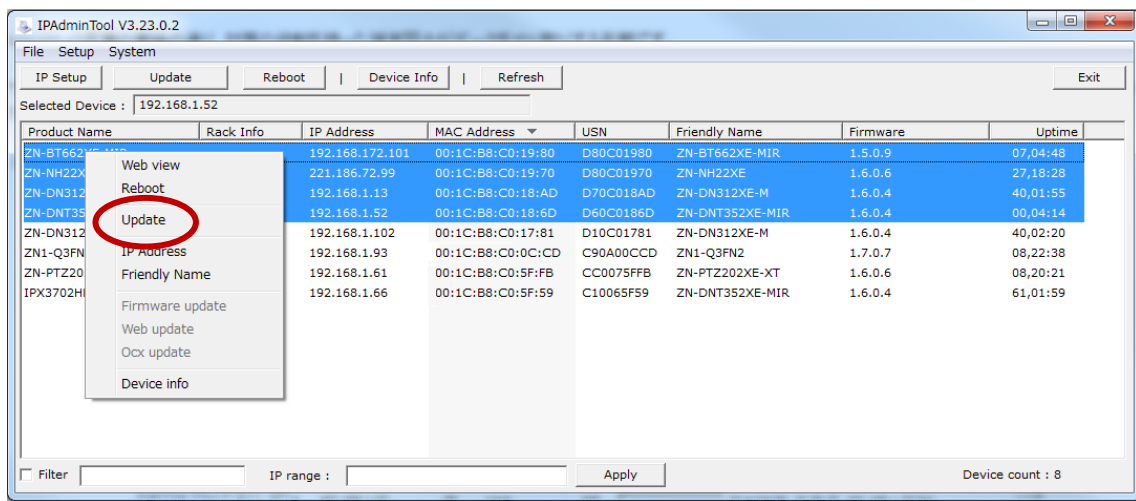


Figure 9. Firmware update of multiple devices

Clicking the Update button displays the popup window as below.

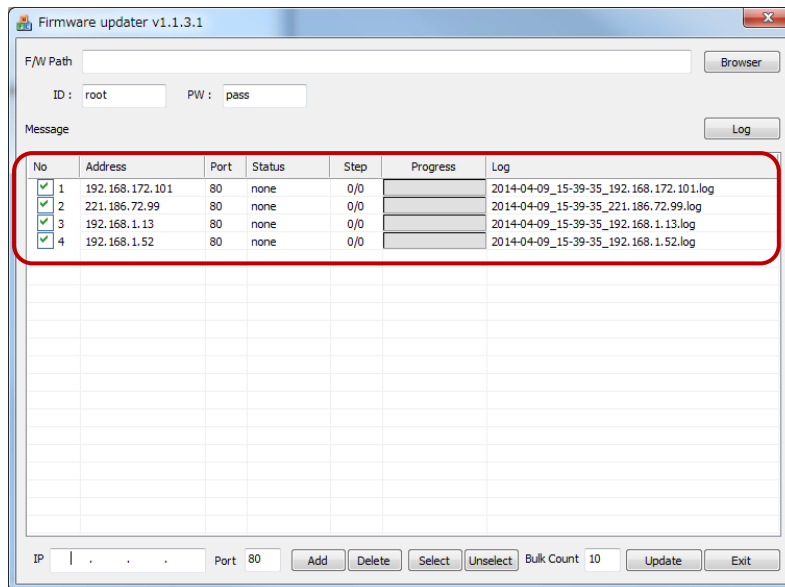


Figure 10. Selected device list

Tip. To manually add devices on the firmware update list

Your devices may have been connected to the external network or the mDNS feature may have been disabled on your device. In this case, you can add the device manually by typing the IP address for firmware update.

Select any device listed on the IPAdminTool and click the **Update** button or run FirmwareUpdate.exe. Type the IP Address you want to update and click the **Add** button as below. Then, you can see that the IP address is newly added on the list.

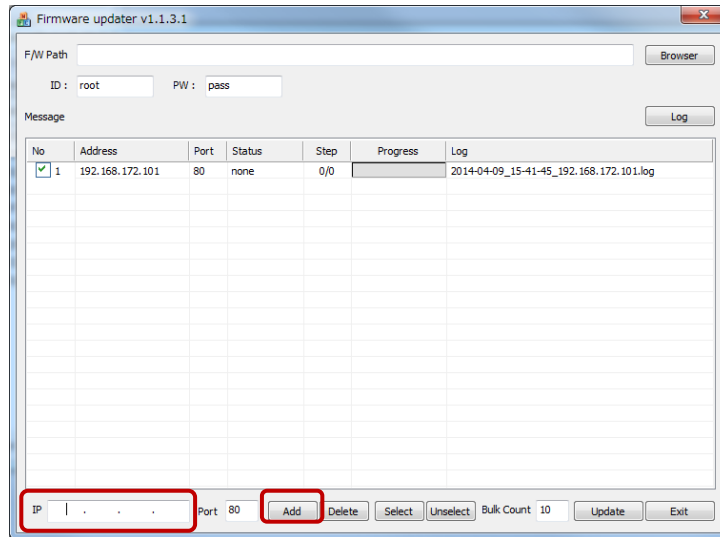


Figure 11. Adding device for firmware update

Tip. To remove devices from the selected list :

If you want to remove the device from the selected list, select the **No** check box and click the **Delete** button. Then, the selected device is removed.

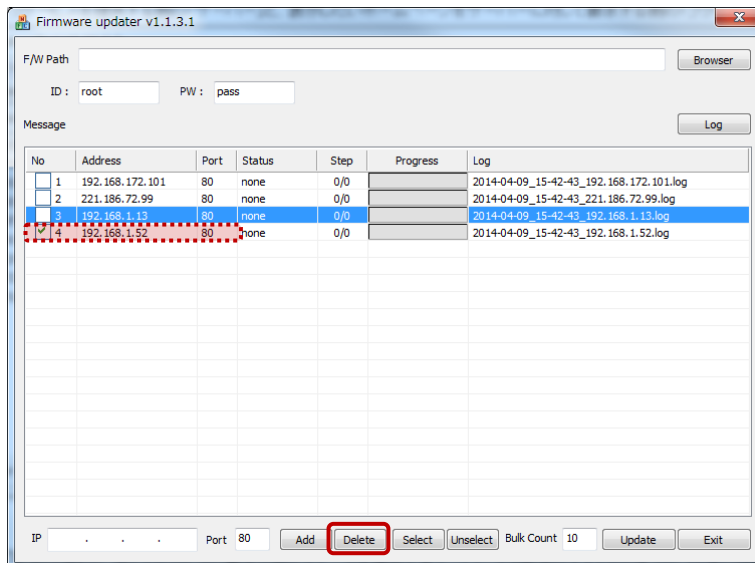


Figure 12. Removal of a device

Step2. Browse the firmware file and update

Now, if you have selected all the devices you want to update, select the firmware file (file format: *.pkt or *.enc) by clicking the **Browser** button, and then click the **Update** button. It requires the log-in authentication as picture below (a). Type the ID and password of administrator authentication. The factory default is 'root' (ID) and 'pass' (password). Wait for a few seconds and the progress bar will show you the current status of update. If the update process is completed, the 'Complete' message will be shown on the status box of selected list as below.

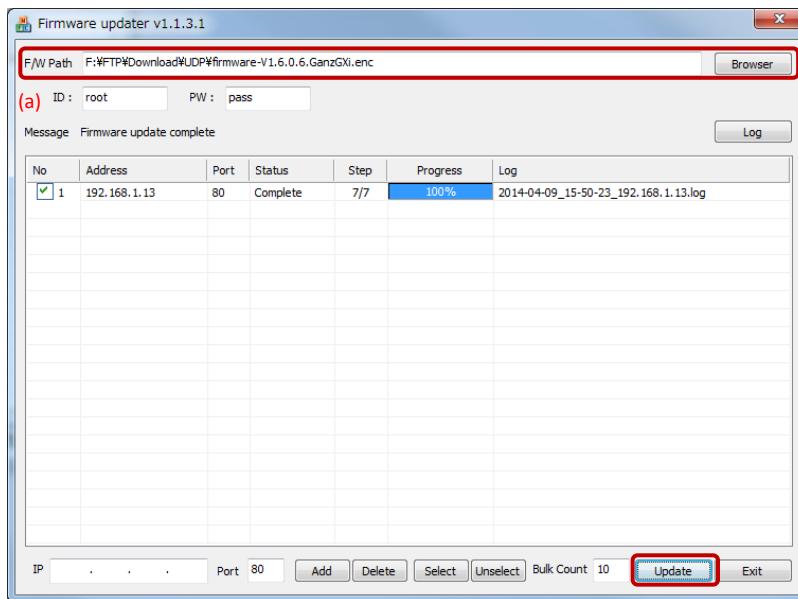


Figure 13. Completed firmware update

Step3. Reboot the system

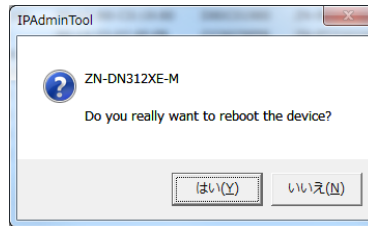
After the firmware update, you should wait for about 1 minute until the device restarts. If your device is not shown on the scanned list of IPAdminTool even after the update and reboot of the system, click the **Refresh** button or try to type the IP address on the Internet Explorer's address bar.

Select / Unselect Button : To select or unselect the device(s) click the check box directly or click the **Select / Unselect** button.

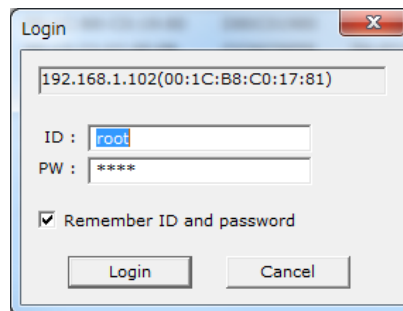
4. Other Features

4.1. How to reboot the device remotely

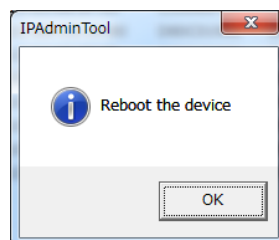
You can reboot the IP device by clicking the **Reboot** button or the **Reboot** option from the shortcut menu. If you choose the **Reboot** menu, the dialog box (a) appears as shown below. Then, click the **Yes** button to log into the device by entering your ID and password as the pop-up window (b). After that, click the **OK** button on the pop-up window (c). Now, the device will get restarted in about 1.5 minutes.



(a)



(b)



(c)

Figure 14. Device reboot

4.2. How to set the retransmit interval for mDNS queries

To set the MDNS message frequency, select **Setup > Frequency Setting** from the menu. If the pop-up window appears as below, set the desired frequency and click the **Save** button to save the changes.

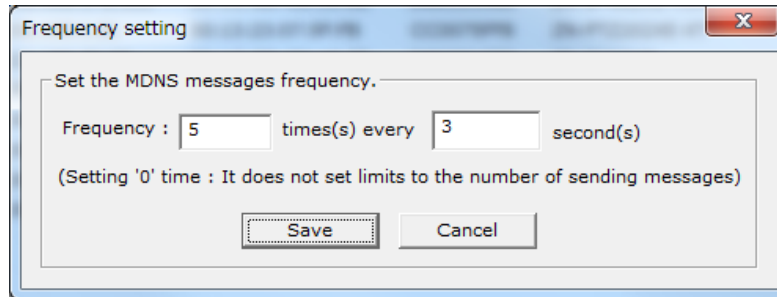


Figure 15. mDNS frequency

What is mDNS?

The IPAdminTool uses a specific protocol, multicast DNS (mDNS), to get the information of devices on the network. When the IPAdminTool is run by a user, it sends the packets which request the answers from devices. The results are shown on each tab of IPAdminTool.

You can adjust the retransmit interval for the mDNS queries in this menu.

As an example above, if you set the frequency as '5 times every 3 seconds,' your IPAdminTool would send out the mDNS queries 5 times in every 3 seconds and you will get the responses from all devices. If you set the times as '0,' it keeps sending the queries without limit.

If you have completed the setting, click the **Refresh** button on the main menu of IPAdminTool. Then, the list will be refreshed according to your frequency setting.

Note 1. Too frequent mDNS queries may result in the increase of the network load.

Note 2. IP address and port number for mDNS is 224.0.0.251:5353.

REVISION HISTORY

MANUAL#	DATE (M/D/Y)	COMMENTS
01A.01	05/04/2012	Created
04-2014-A	04/09/2014	Updated for the latest software