



PixelPro

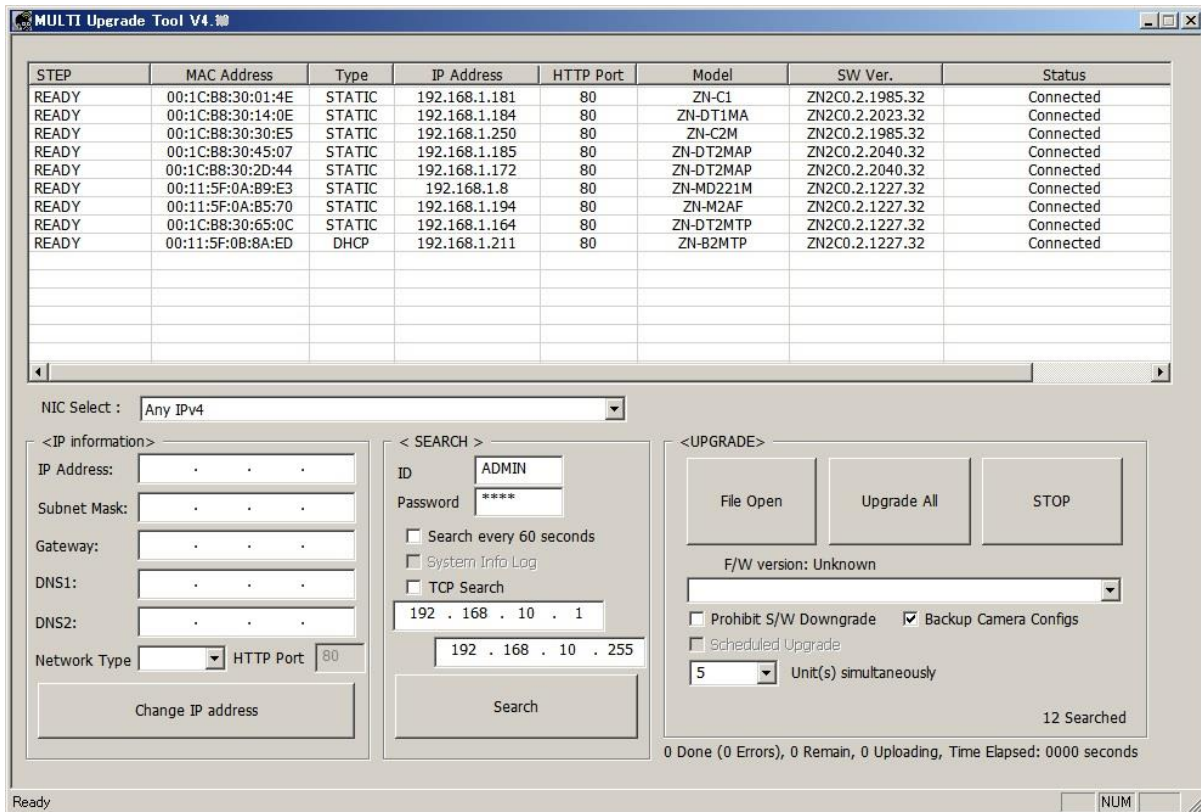
Multi Upgrade Tool

| INSTRUCTION MANUAL

GAWZ[®]



The Multi Upgrade Tool is the software to control IP address settings and upgrade FW for PixelPro series network cameras.

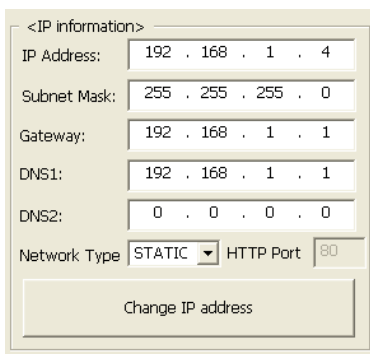


1. NIC select



If your PC has two NIC interface, you can select the NIC to search cameras

2. IP Address settings



- 1) Select the camera from the list
- 2) Select Network Type (STATIC/DHCP)
- 3) Specify network informations if STATIC selected.
- 4) Click “Change IP address” button to apply settings.
- 5) After the changes are applied to the camera, the tool re-search the cameras on the network.

3. Search

- 1) **Specify user ID and Password for the cameras.**
Initial value are “ADMIN” and “1234” as default settings of camera.
- 2) **Search every 60 seconds**
If selected, the tool search the camera every 60 seconds automatically.
- 3) **TCP search**
The option to search the camera by TCP protocol. Search the camera that belongs in the same Subnet from the assigned IP range.

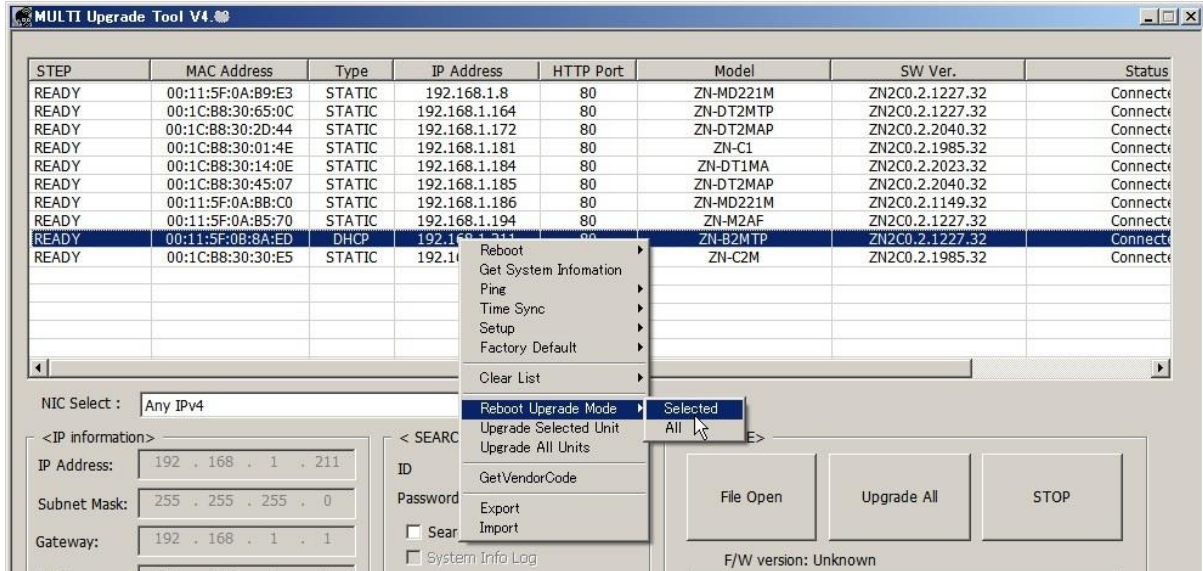
4. Upgrade

- 1) **File Open**
Select the file for upgrade FW.
- 2) **Upgrade All**
Upgrade all cameras in the list
- 3) **STOP**
Terminate upgrade process
- 4) **“Prohibit S/W Downgrade**
Un-Select it, if you want to downgrade.
- 5) **“Backup Camera Config”**
Maintain the current camera configuration (codec, Network, etc) after the firmware upgrade.
- 6) **Number of units upgrade simultaneously**
Specify the number of units to upgrade simultaneously.
Maximum number is 10.
Example: total units : 15
If the number selected is 5, the upgrade process will be separated to 3.

Preparation of firmware upgrade;

To upgrade Firmware of the TI cameras (ZN-MD2xM/ DxxMTP/ BxMTP/ MB2xxM/ MDI2xxM/ PTZ220M), follow the instruction below.

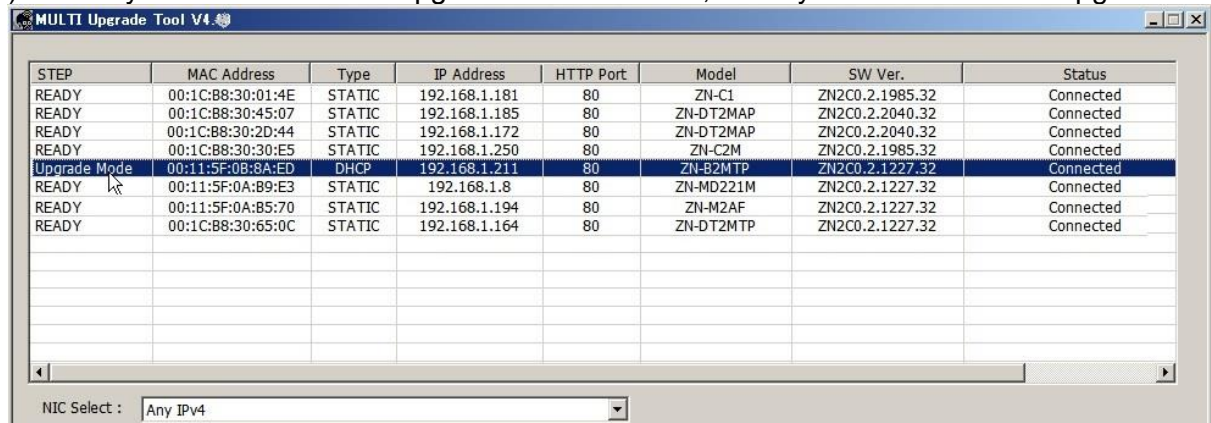
- 1) Enable Firmware Upgrade mode with selecting the Reboot Upgrade Mode “Selected” or “All camera” on menu with mouse right click.



- 2) The camera automatically switches to Firmware Upgrade mode.

Please wait about 40 sec for camera enable Firmware Upgrade mode.

- 3) You can confirm status of Firmware Upgrade mode on Step of camera list, after click a Search button.
- 4) When you could confirm “Upgrade Mode” on list, then you can Firmware upgrade.

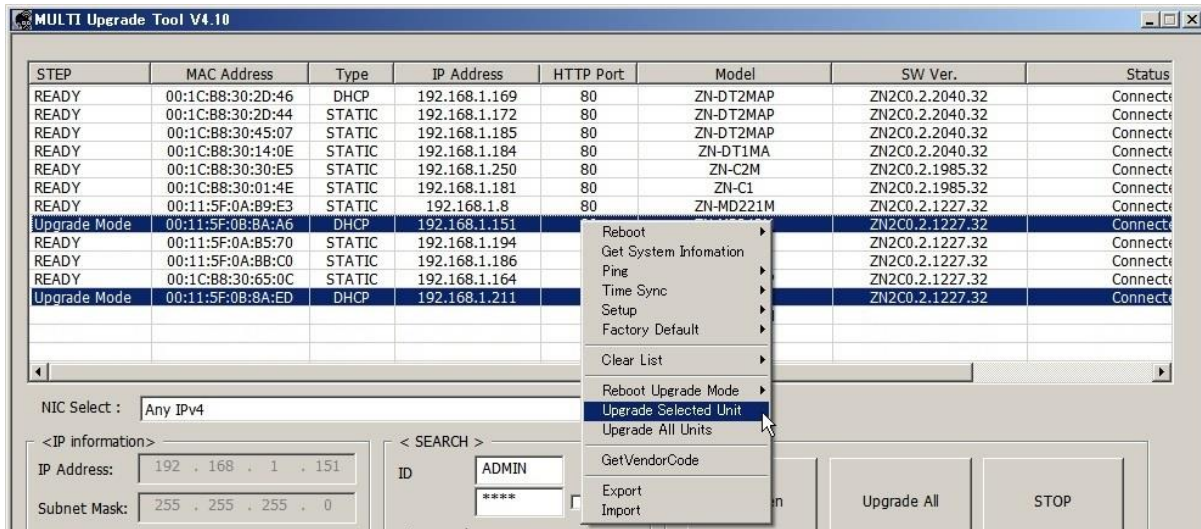


*If you don't want to Firmware upgrade after you did enable Firmware upgrade mode. Then please do “Reboot” on menu with mouse right click.

4.1 Upgrade All

Use “Upgrade All” button to upgrade all the camera in the list.

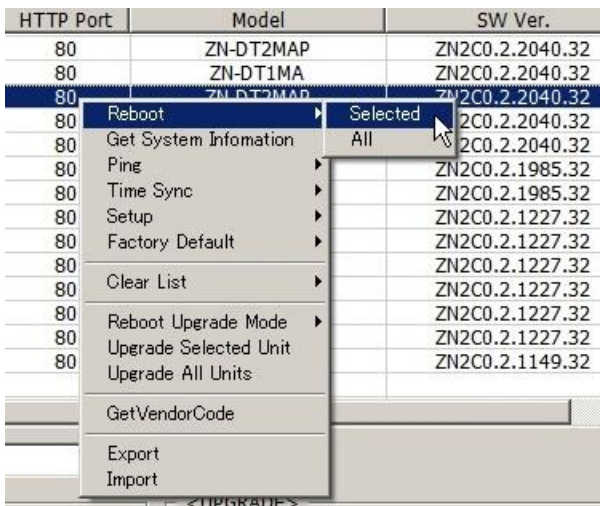
4.2 Upgrade Selected Unit(s)



1. Select the cameras using “CTL” + Mouse click to upgrade.
2. Then open menus with mouse right click.
3. Select “Upgrade Selected Unit”

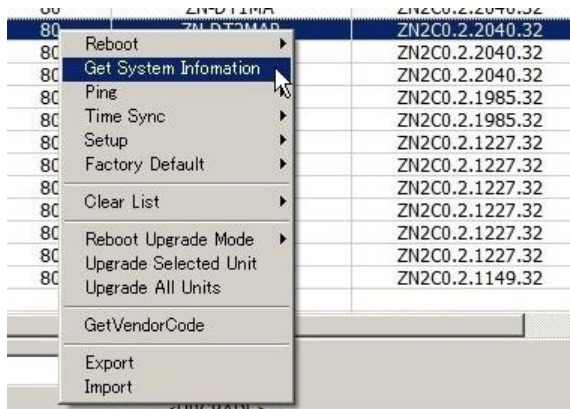
5. Others

5.1 Reboot



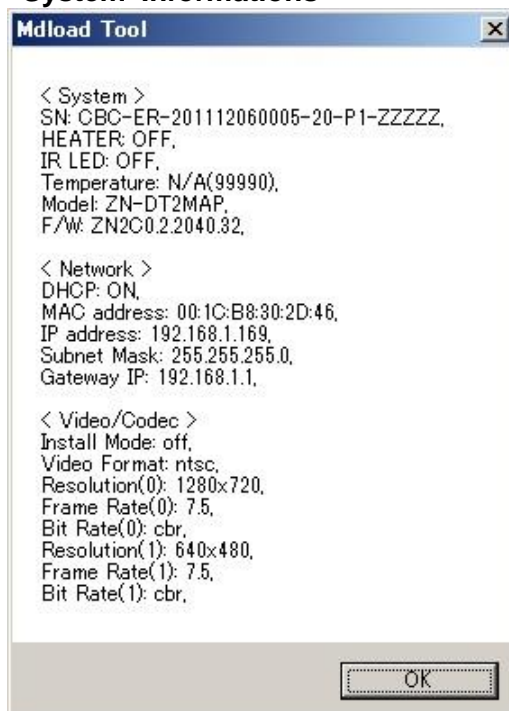
Reboot “Selected” or “all” cameras

5.2 Get System Information

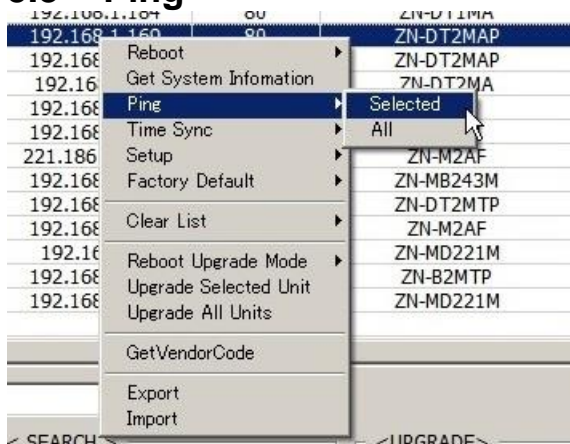


You can get the system information of the camera.

System Informations

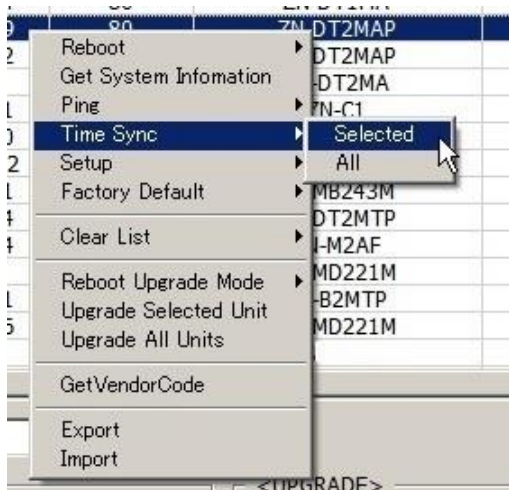


5.3 Ping



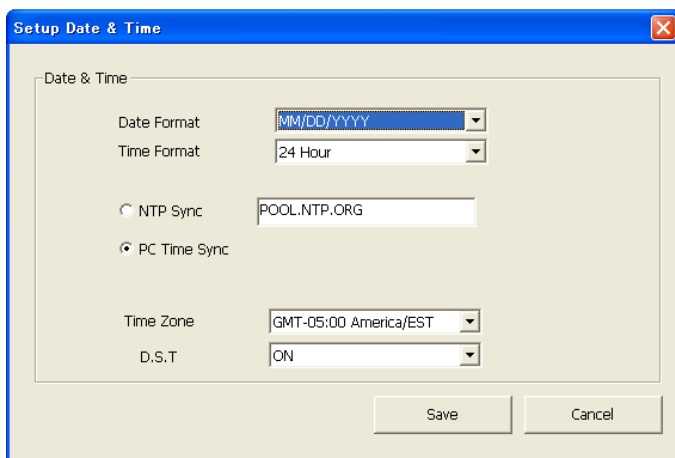
You can ping selected or all cameras.

5.4 Time Sync



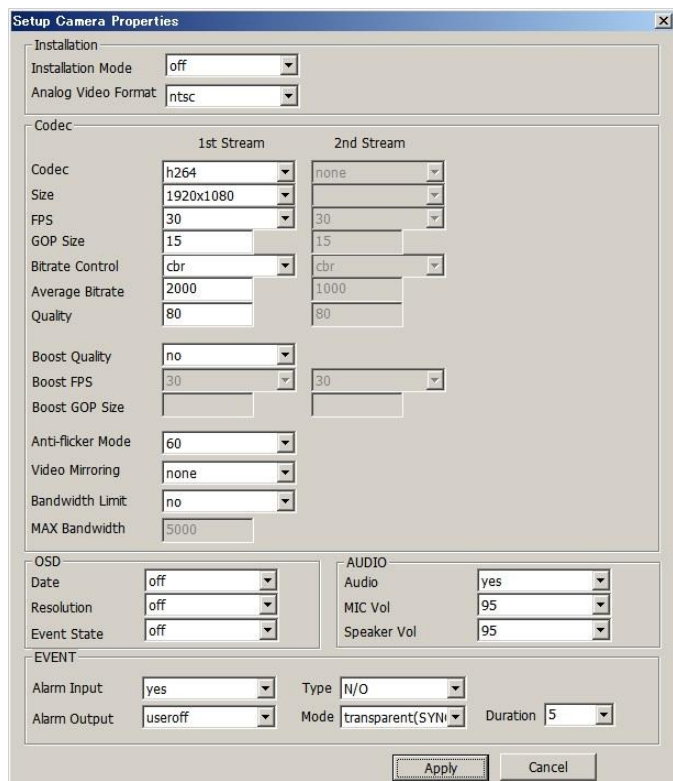
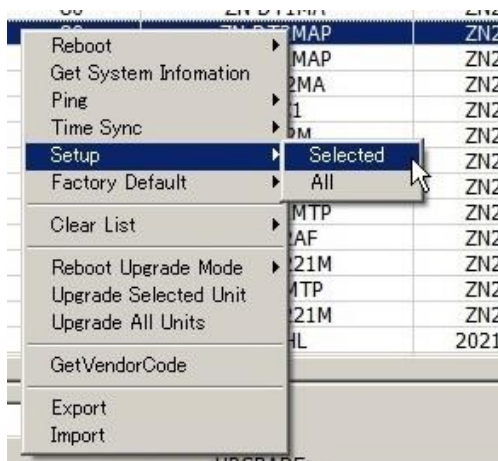
You can setup Date & Time of selected or all cameras from the tool.

The “Setup Date & time” window will be opened when select.



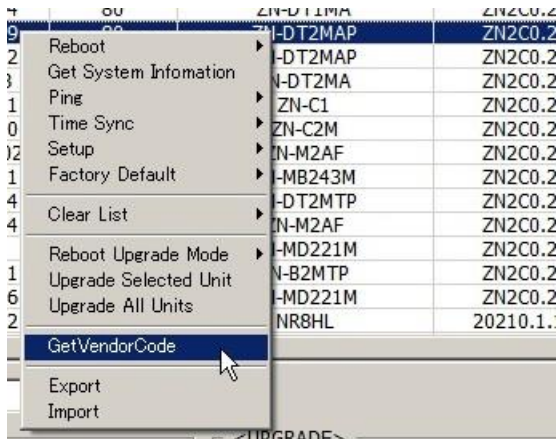
The time can be synchronized to NTP server specified or PC time.

5.5 Setup



You can set parameters to the Camera(s)

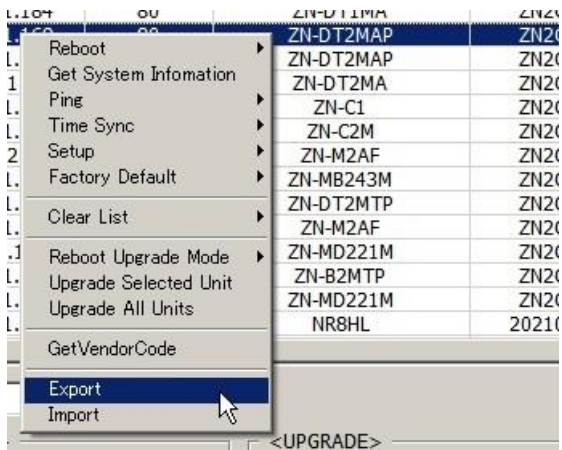
5.6 GetVenderCode



You can get vender code of selected Camera.



5.7 Export/Import



You can export or import camera list from/to file.